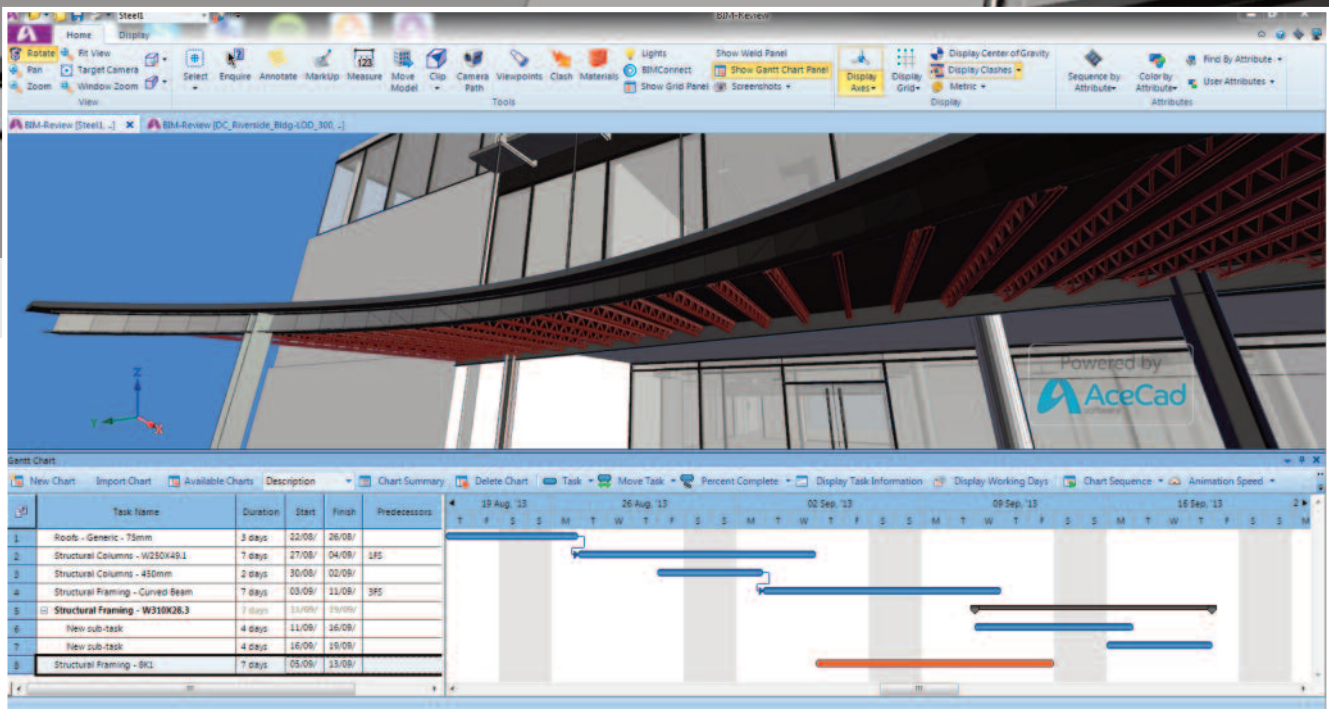


Visualise your project  
from concept to completion



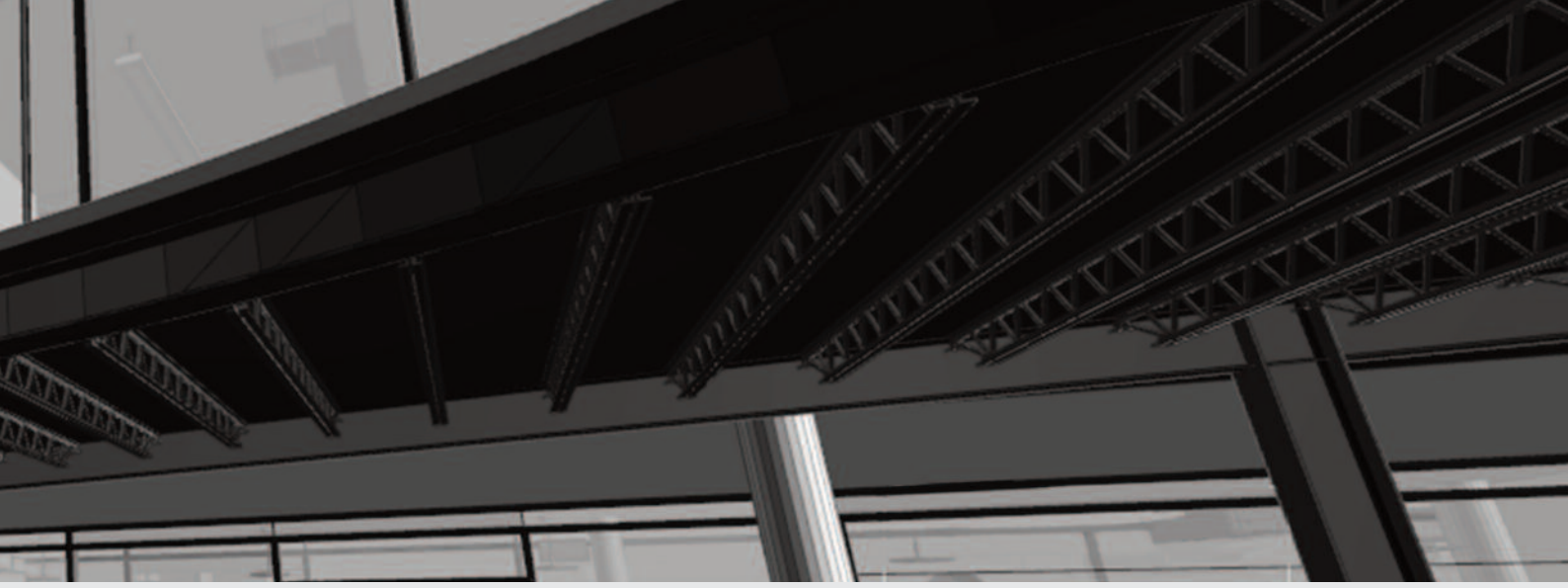
# Putting **BIM** to work

Building Information Modelling (BIM) has fast become an essential in today's construction industry. The challenge faced by management teams now is to integrate the vast amount of data available in the most useful, accessible way, so that it can support effective decision making.

Back in the 1980s, AceCad Software employed expertise gained in the oil and gas sectors to develop 3D modelling systems for steel fabrication.

The company has now put its sector expertise to use in BIMReview, a software tool that provides an integrated project hub bringing together data from multiple sources across a complete project lifecycle.

"BIMReview enables you to view all your 3D models simultaneously," explains AceCad's Technical Director Simon Inman. "By importing IFC, STEP, IGES, and CIS/2 models, along with API links, it brings together intelligence from all the major BIM authoring products."

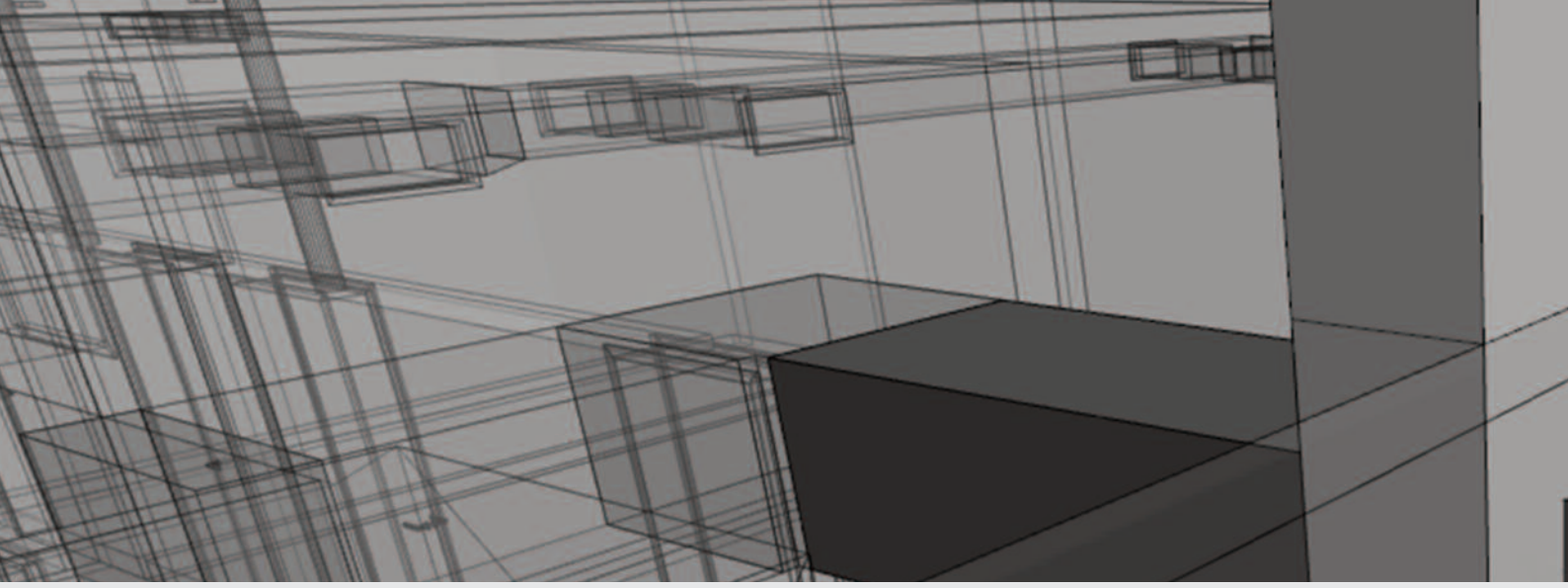


## **BIMReview evolution delivers a range of practical benefits:**

- Improved workflow through real-time access to BIM model content across multiple teams.
- Enhanced decision support through improved collaboration.
- Immediate identification of clashes and conflicts.
- Improve planning with 4D timelines for engineering, procurement, suppliers and construction teams.

Because BIMReview enables more efficient working, it has the capability to shrink schedules and reduce the risk of overruns.

*“BIMReview is proving to be an invaluable tool because it brings together everything you need to deliver a successful construction project in one easy-to-use desktop application” – Simon Inman.*



### **Low cost, immediate returns**

One of the most appealing things about BIMReview is its low cost of ownership. It enables savings in materials, time and money because all of the information about a construction project is in one place. Because the application can be downloaded and installed within a couple of hours, the return on investment is effectively immediate. The intuitive interface means that users don't need onsite training, however, extensive support is available as well as online tutorial videos.

Cost savings from day one:

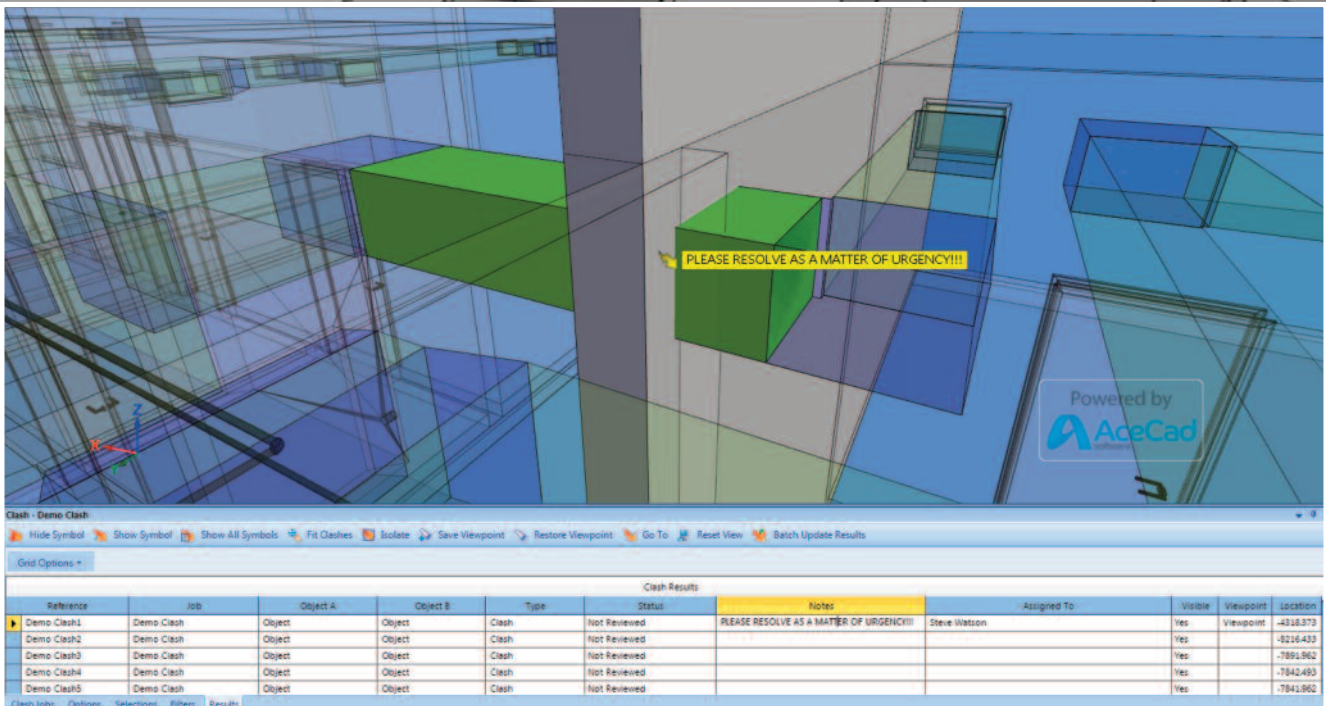
- Eliminate duplication and over-ordering.
- Better decision making through enhanced information.
- Immediate availability of essential data.

### **Enhanced workflows**

BIMReview is designed to facilitate collaboration across the project. Architects, owners, consultants, contractors, fabricators and engineers can work on a single process through the same model with a level of accuracy not previously possible. When changes are needed, everyone involved has access to all the models and has the information necessary to make the most valuable input.

### **Improved project efficiency**

By providing real-time access to BIM model content and status throughout the supply chain and across dispersed teams, BIMReview enables more efficient working. Those involved in the project no longer have to locate and cross-reference multiple design models in order to properly understand and understand and resolve issues.



## Try BIMReview for free

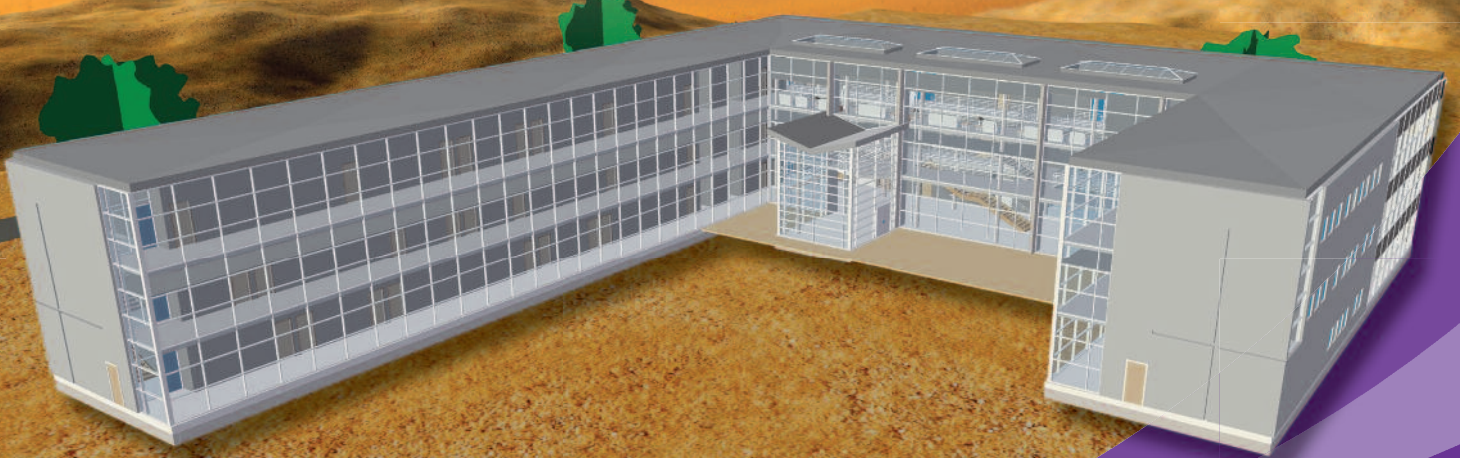
It's easy to use. You can download a free trial of BIMReview or request a free demonstration from AceCad's dedicated website: <http://www.bim-review.com/download.php>

### Contact:

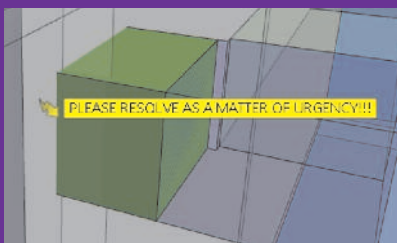
Mr Simon Inman, Director  
 AceCad Software  
 Tel: 01332 545800  
[www.bim-review.com](http://www.bim-review.com)  
[www.twitter.com/AceCadSoftware](https://www.twitter.com/AceCadSoftware)

# Visualise your project from concept to completion

BIMReview, the affordable BIM collaborative and visual tool from design to the construction site.



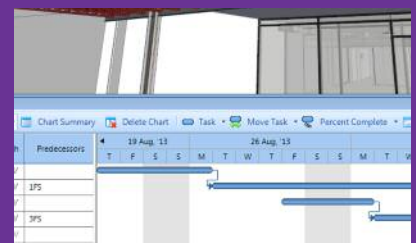
## 3D Clash Detection



## 3D Visual Mark-Ups



## 4D Planning



To start saving time, money and resources today:

Call us on 01332 545800  
or visit: [www.bim-review.com](http://www.bim-review.com)



Brought to you by  **AceCad** developing industry software solutions since 1986